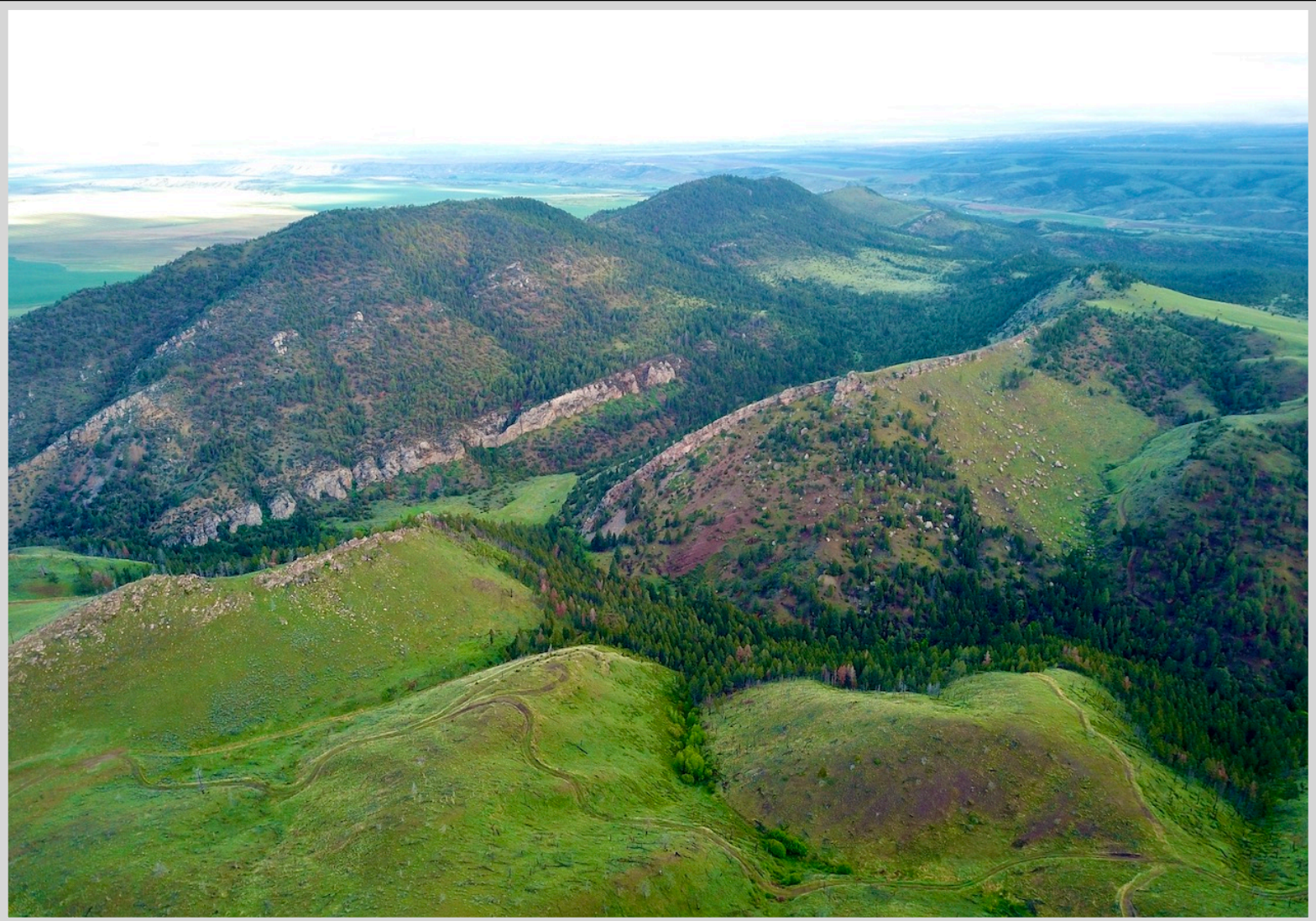


# CORDER

AND ASSOCIATES, LLC



## *Ridge Road Ranch*

*0 Ridge Road, Townsend, MT 59644*

*Offered at \$2,900,000*



*Presented Exclusively by*

**Trampus Corder, Broker**  
**Staci Corder, Broker**

833-783-3224 toll free  
406-622-3224 office  
Corderland@gmail.com

EXCLUSIVE PARTNER OF  
**LANDLEADER.**



# Property Information

**Lot Size:** 1,549.45 deeded acres

**Taxes:** \$835.52 (2022)

**Legal:** Lengthy

**Utilities:** Power

**Fencing:** Perimeter and Cross-fenced

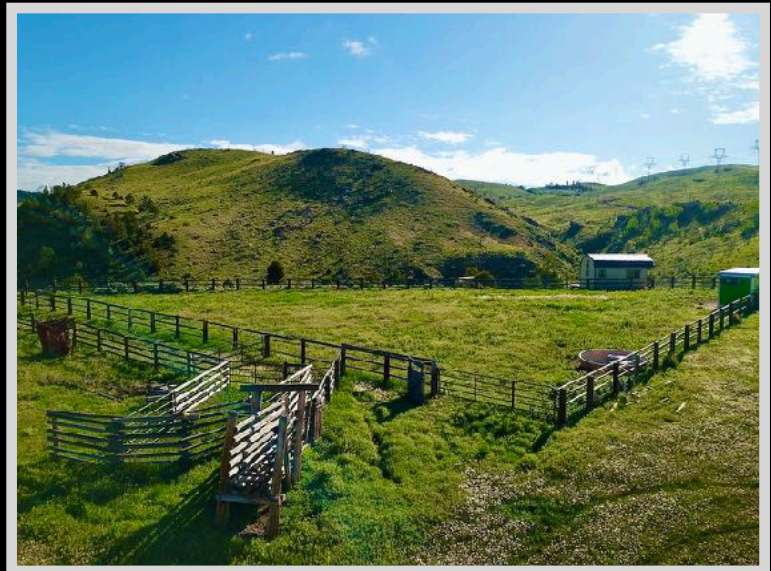
**Water:** Greyson Creek; Springs

**Water Rights:** Yes

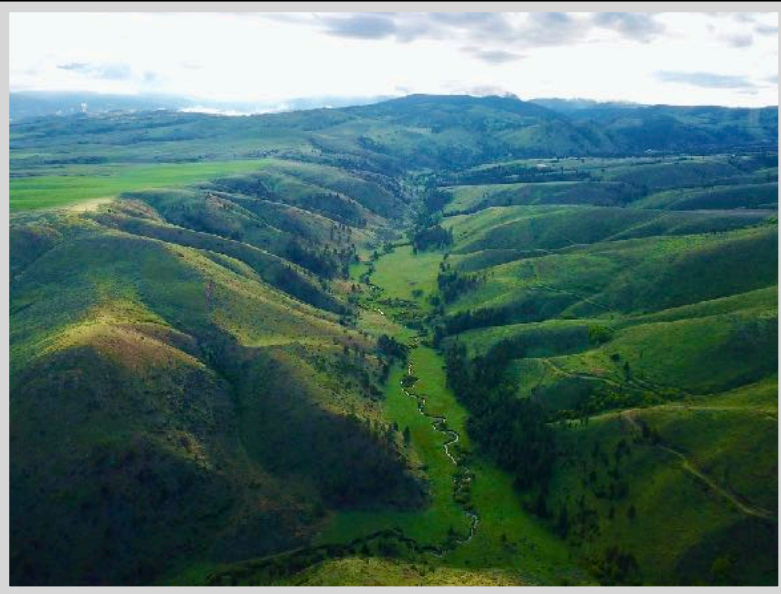
**Outbuildings:** Bunkhouse cabin; Outhouse; Corrals; Storage container

**Hunting District:** 391

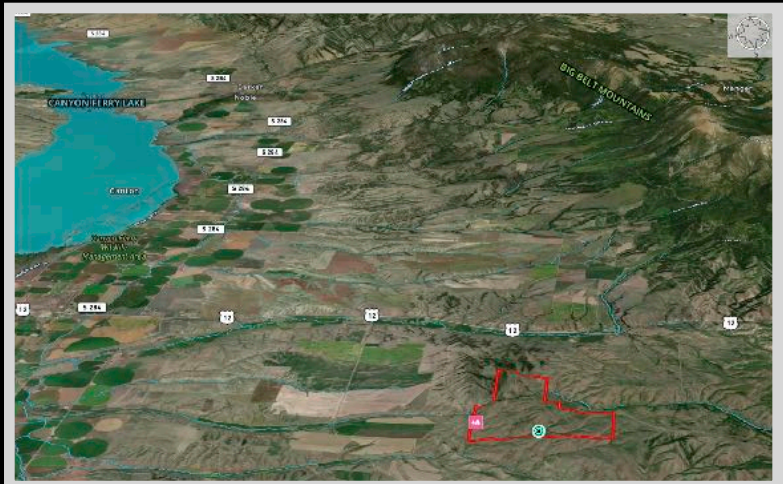
**Access:** Ridge Road



*Experience this property virtually!*



*Welcome to Ridge Road Ranch*



The information is provided by outside sources and deemed reliable but not guaranteed by the brokerage firm, its agents or representatives. Buyers and their agents are encouraged to conduct due diligence, and verify to their satisfaction, the information contained herein regarding property.





## Executive Summary

Experience Montana the way it was meant to be experienced: wild, natural, and serene. Magnificent terrain from rolling meadows blanketed with lush vegetation to towering pine trees illustrate this gorgeous property. The draws and wooded areas provide the cover that large game seek. Black bear, deer, herds of elegant elk, moose, mountain lion, lynx, and other critters have been captured by the trail cam journeying through the acreage. This 1,549.45-acre parcel lies in the "Valley of Adventure," described as such because of the abundant ways to recreate. A sportsman's paradise, the area has tremendous hunting opportunities! Access

to the property is convenient and unrestricted. The ranch features operational and functional corrals near a one-bedroom dry cabin with power. In addition, a storage container is situated near the corrals and cabin and is utilized as a convenient garage for storing a side-by-side, the mower, and other recreational toys. Retreat to this tranquil recreational property to hunt, fish, explore off road, photograph, and take in the spectacular views! Bring your horses or cattle as the acreage has perimeter fencing and some cross-fencing south of Ridge Road. The native grasses here are rich with nutrients adequate for packing pounds on the young calves. A rancher could easily run 125 pair with forage left over for the wildlife. Greyson Creek traverses the property with its glacial flowing waters attracting thirsty creatures. Several natural and developed springs flow throughout with stock tanks. Canyon Ferry is a short drive from the property offering up numerous recreational activities on the water and the surrounding area such as boating, kayaking, canoeing, water skiing, floating, swimming, picnicking, camping, fishing, hunting, ice fishing, cross country skiing, and so much more! The property is an hour from multiple airports including Bozeman International Airport in Bozeman, MT and Helena Regional Airport in Helena, MT. Access to this area is convenient from potentially anywhere in the US due to the proximity of airports. Looking to purchase more paradise? An adjacent parcel is available consisting of 165 acres with a hunting cabin. This paradise has sweeping views, wonderfully curious wildlife, and adrenaline-pumping adventures!



## The Ranch's Splendor





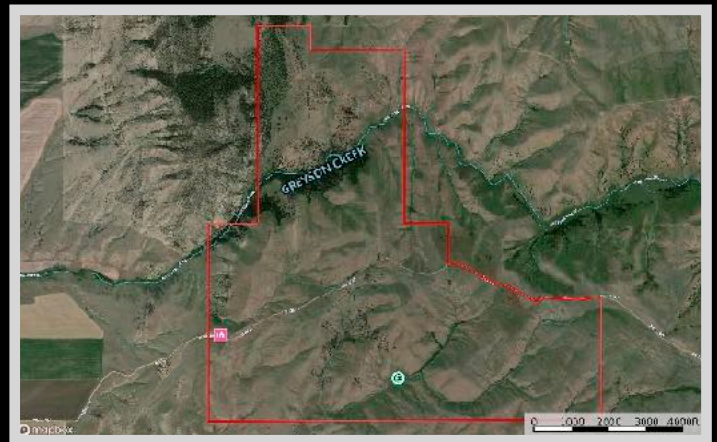
## Local Area

Between all of the major cities in Montana is the county seat of Broadwater County, Townsend. Located in the Missouri River Valley between the Big Belt and the Elkhorn Mountains, where the Missouri River opens into Canyon Ferry Lake (Montana's 3<sup>rd</sup> largest body of water), Townsend was named by railroad officials in 1883. It was then that a rail stop was made because businesses were becoming more established to support the gold mining in this region. Land lots then were just \$5 apiece! Famed explorers Lewis and Clark traveled through in 1805. The mighty Missouri River borders the town, and the area is nicknamed the "Valley of Adventure" because of the vast outdoor opportunities that are readily available. Large areas of BLM and state land surround the town. Townsend is just 15 minutes from Canyon Ferry Lake which is one of Montana's most sought-after recreational spots. The lake provides activities of boating, ice boat sailing, year-round fishing for Trout, Salmon, Perch, and Walleye, camping, sightseeing, picnicking, hiking, hunting, and swimming. It is also conveniently near 4 major ski areas ranging from 1.5 to 3 hours away. In addition, the Broadwater County Museum is located in Townsend and holds unique artifacts such as an authentic painted buffalo robe. A short drive of 35 minutes will get you to the state capital of Helena.

## Area Attractions

### Canyon Ferry Lake

The Canyon Ferry Valley is rich with recreational opportunities! The lake spans 25 miles leaving plenty of room to boat, fish, sport fish, sail, swim, water ski, and more. It is proudly Montana's 3<sup>rd</sup> largest body of water and a popular destination for outdoor enthusiasts. Twenty-four recreation sites are maintained by the Bureau of Reclamation. Fishing is phenomenal and you can reel in Trout, Salmon, Perch, and Walleye year-round. When the snow flies, the lake is dotted with ice fishing huts and is also utilized for ice skating and iceboat sailing. In addition, there is the Canyon Ferry Wildlife Management Area which encompasses 5,129 acres. The goal of this area is to maintain the existing habitat and provide a place for wildlife viewing and hunting. Archery, shotgun, muzzleloader, and traditional handguns can be used to hunt white-tailed deer and birds such as pheasants, ducks, and Canadian geese. The area is superb for viewing migratory or nesting birds such as Canada geese, double-crested cormorants, American white pelicans, Caspian tern, and ospreys. White-tailed deer, beaver, raccoon, mink, red fox, and sometimes otters and moose can be observed.



## **Hauser Reservoir**

*Hauser Lake is a 3,200-acre reservoir on the Missouri River created by Hauser Dam. The lake yields rainbow and brown trout, walleye, and perch. It is an extremely popular take-off point for weekend boating, fishing, and water skiing. There are scenic public campgrounds on Hauser Lake, White Sandy (BLM), Devil's Elbow (BLM), Riverside (BOR), and a few yards further from Black Sandy State Park (MFWP).*

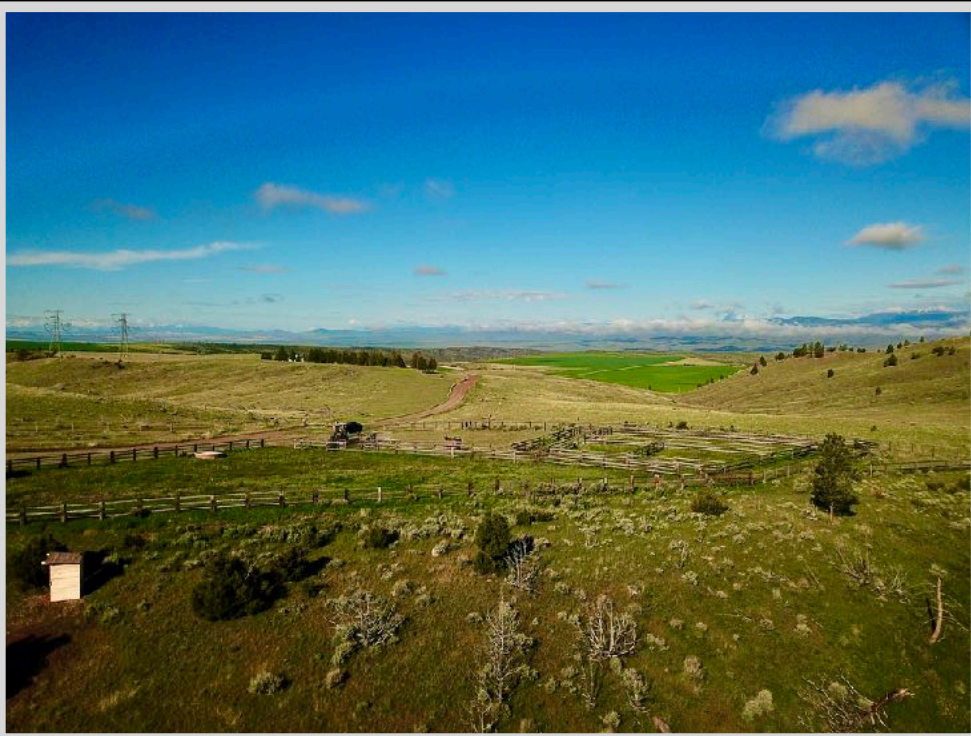
## **Hunting**

*The area around Townsend, Montana is well-known for prominent elk hunting. The designated property lies within Hunting District 391 for deer/elk/lion. Elk herds have been caught on film by the landowner and are known to travel these areas and up along the Little Belt Mountains. Permits can be purchased for a general deer license or general elk license to hunt brow-tined bull or antlerless elk. There is a specific season for hunting brow-tined bull elk on National Forest Land as well.*

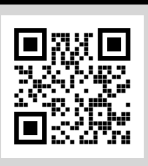


## **The Missouri River**

*The mighty Missouri River is the longest in North America flowing over 2,341 miles. The Missouri River flows from its source near Three Forks, Montana until it joins with the prevalent Mississippi River at St. Louis, Missouri. The Upper Missouri River was designated as a component of the National Wild and Scenic River System in 1976 beginning at Fort Benton, Montana and running 149 miles downstream. The Missouri River is a remarkably valuable life-giving source with 49 species of fish residing in its waters. The Missouri River is also a valuable historical component of the Lewis and Clark National Historic Trail. You can enjoy floating, fishing, hiking, hunting, and camping on or around the river and view 60 species of mammals, 233 species of birds, and 20 species of amphibians and reptiles!*

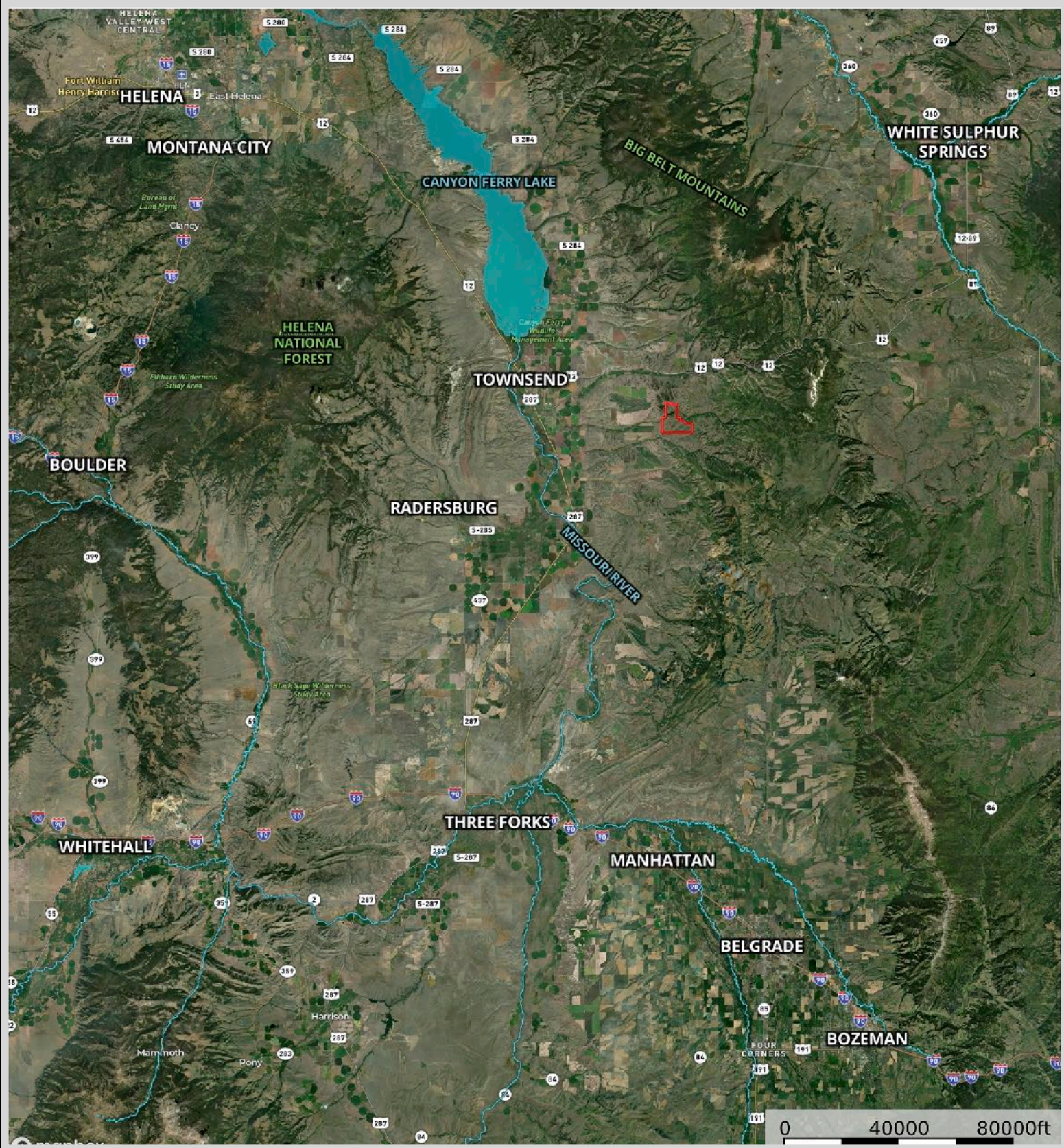


*Corrals and Views*



*The information is provided by outside sources and deemed reliable but not guaranteed by the brokerage firm, its agents or representatives. Buyers and their agents are encouraged to conduct due diligence, and verify to their satisfaction, the information contained herein regarding property.*

# Property Map



The information is provided by outside sources and deemed reliable but not guaranteed by the brokerage firm, its agents or representatives. Buyers and their agents are encouraged to conduct due diligence, and verify to their satisfaction, the information contained herein regarding property.