

CORDER

AND ASSOCIATES, LLC



Green Ridge Lane Ranchette

14 Green Ridge Lane, Great Falls, MT 59405

Offered at \$824,000

Presented Exclusively by
Zach McKinley, REALTOR®

406-622-3224 office
406-799-2664 cell
Zach@CorderLand.com

EXCLUSIVE PARTNER OF
LANDLEADER.



Property Information

Lot Size: 20.08 Deeded Acres

Taxes: \$1,999.00 (2021)

Legal: S36, T20 N, R04 E, IN NW4 MK 4E; S25, T20 N, R04 E, IN SW4 MK 4E

Year Built: 1987

Bed/Bath: 5 bed/4 bath

Square Feet: 4,042

HVAC: Natural gas forced air; Central A/C; Natural gas fireplace

Water/Sewer: Well @ 20 GPM/Septic

Appliances: Built in oven, cook top, microwave, dishwasher; Basement has a full kitchen with sink, refrigerator, and small gas range/oven

Special Enhancements/Extras: Underground sprinkler system; On-demand water heater; Built in pantry; Culligan water softener; Oak Wainscot in basement; Oak cabinets; Corner jet tub in basement bathroom; Concrete outdoor patio; Custom shades on windows; Central Vacuum

Fencing: 20 acres fenced with barbed wire and a post and rail corral

Garage: Attached insulated garage with a 16' x 7' overhead door

Outbuildings: 24' x 30' shop

HOAs: \$250.00 annually

Hunting District: 413



*Experience this
home virtually!*



The information is provided by outside sources and deemed reliable but not guaranteed by the brokerage firm, its agents or representatives. Buyers and their agents are encouraged to conduct due diligence, and verify to their satisfaction, the information contained herein regarding property.



Executive Summary

Just east of Great Falls, 20.08 acres accompany a well-maintained home of 4,024 square feet! The spacious home offers comfort as the 20 acres provide a place for your horses or animals. Encompassed by perimeter barbed wire fencing, the property has a post and rail corral, an attached insulated garage, and a 24' x 30' shop. Get out of the city for open spaces and still be close enough to take advantage of the convenient amenities. The home was designed with convenience and opportunity in mind. The downstairs features a full kitchen, laundry hookups, a pool table, a dining room, and guest suites. Potentially, this area could serve as a rental, an Airbnb, or a mother-in-law suite. The home is outfitted with oak cabinets and trim, a central vacuum system, an on-demand water heater, a water softener, and underground sprinklers to keep the surrounding yard lush and green. The main floor features a laundry room, two living rooms, and a master suite with its own private deck. There is much to appreciate about this home and property. Ranchettes near Great Falls are rare, so don't wait too long to experience the freedom this property offers!



Local Area

Great Falls, MT is located in the central part of the state and straddles the mighty Missouri River. The seat of Cascade County is referred to as the "Electric City" because of its numerous dams and power plants. Great Falls includes many recreational activities for you and your family to enjoy together such as the C. M. Russell Museum which displays famed artist Charlie Russell's works and home. Get outside and enjoy the crystal-clear waters of Giant Springs State Park or float and fish the Missouri River. The city boasts the Lewis and Clark Interpretive Center. The center provides displays and exhibits that trace the explorers' journey! Great Falls holds one of the most prestigious medical facilities in the state and offers an International Airport. Great Falls International Airport offers flights of Alaska, Allegiant, Delta, and United, with direct flights to Denver, Las Vegas, Minneapolis, Phoenix, Salt Lake City, Seattle, and Chicago (seasonally). With too much to list, Great Falls awaits exploration, and you are sure to cherish the memories that you will make!

The information is provided by outside sources and deemed reliable but not guaranteed by the brokerage firm, its agents or representatives. Buyers and their agents are encouraged to conduct due diligence, and verify to their satisfaction, the information contained herein regarding property.



(Local Area cont.)

Many features make Belt, Montana a much-desired haven. For example, it attracts rugged competition from all over to participate in its annual rodeo and is still able to offer a small-town feel and experience. Belt is home to the famous Harvest Moon Brewery which combines Montana's luscious grain with fresh and clean water out of local streams and wells to make a variety of beers sought after by connoisseurs from all over. You can find ample history throughout the town or in the Belt Museum housed in the old town jail! In addition, Belt is listed on the National Register of Historic Places and claims Montana's very first coal mine. Belt's name comes from a nearby mountain, Belt Butte, which looks like it has a belt of rocks around it. The Highwood and Little Belt mountains provide areas for hiking, biking, camping, creek fishing, hunting, and recreating, and the Sluice Boxes State Park is nearby as well. Great Falls is a mere 23 miles away and has an International Airport and prestigious medical facilities for your convenience.

Area Attractions



Missouri River Fishing

Central Montana is excellent walleye country. The mighty Missouri River is the longest in North America flowing over 2,341 miles. Widow Coulee offers a public fishing site. The terrain surrounding this area is beautifully described as a painting with colors streaming through the cliffs along the river as they wind along the prairie. In this stretch of the Missouri River, game fish to hook include Catfish, Bass, Northern Pike, Walleye, and Trout. A variety of methods can be used as well as a variety of bait.

Giant Springs State Park

The Lewis and Clark Expedition in 1805 discovered Giant Springs State Park. The crystal-clear water originates in the Little Belt Mountains and takes twenty-six years to reach the springs! It is no wonder it is the most visited state park in Montana. The park sprawls out over 4,500 acres and is centered around the "Mighty Mo" (Missouri River). Many people utilize the park's twenty miles of trail to bike, hike, walk, bird watch, or just enjoy the scenery. The park also features waterfalls for which Great Falls was named. Be sure to visit the fish hatchery while at the park. The monster trout raised here are quite a sight! Fishing is fantastic here. Once named the shortest river in the world, the Roe River flows out into the Missouri. This state park is one of Montana's gems!



The information is provided by outside sources and deemed reliable but not guaranteed by the brokerage firm, its agents or representatives. Buyers and their agents are encouraged to conduct due diligence, and verify to their satisfaction, the information contained herein regarding property.

Little Belt Mountains

The Little Belt Mountains are a section of the rugged Rocky Mountains. They lie mostly in the Lewis and Clark National Forest. The unspoiled nature is used for logging and recreation. The mountains have been mined for silver since the 1880s and for sapphires since 1896. The famous Yogo sapphire is mined near Yogo Creek. The highest peak of the range is Big Baldy Mountain towering at 9,175 feet. Ponderosa pines and Douglas-firs predominantly fill the forest providing cover for black bear, elk, white-tailed, and mule deer. Rifle and archery hunting is excellent, and during the fall, hunter's orange can be spotted trekking up the trails. The hum of motorized vehicles can often be heard as it is a popular sport here as well.



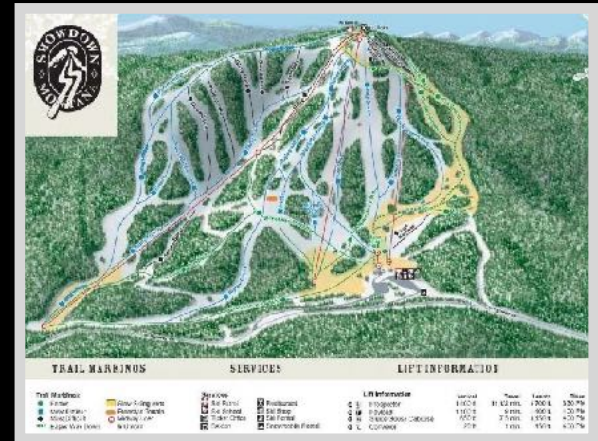
Highwood Mountains

In Chouteau County near Highwood, Belt Creek and Highwood Creek provide Brookie Trout fishing. The deep pools along the cliffs and rock formations are great for fly fishing or for catching bigger trout. The Highwood Mountains are a popular destination for camping, fishing, ATV-ing, horseback riding, hiking, and enjoying a fantastic scenic drive. There is a campground with maintained sites and a scenic mountain drive that takes you through several creek crossings, mountain meadows, and gorgeous forest until you reach Geyser, Montana. Wildlife is abundant as you drive past farm fields and ranches. It isn't uncommon to meet a cattle drive! Moose, black bear, bald eagle, fox, coyote, white-tailed and mule deer, and mountain lion are some animals you can catch glimpses of.



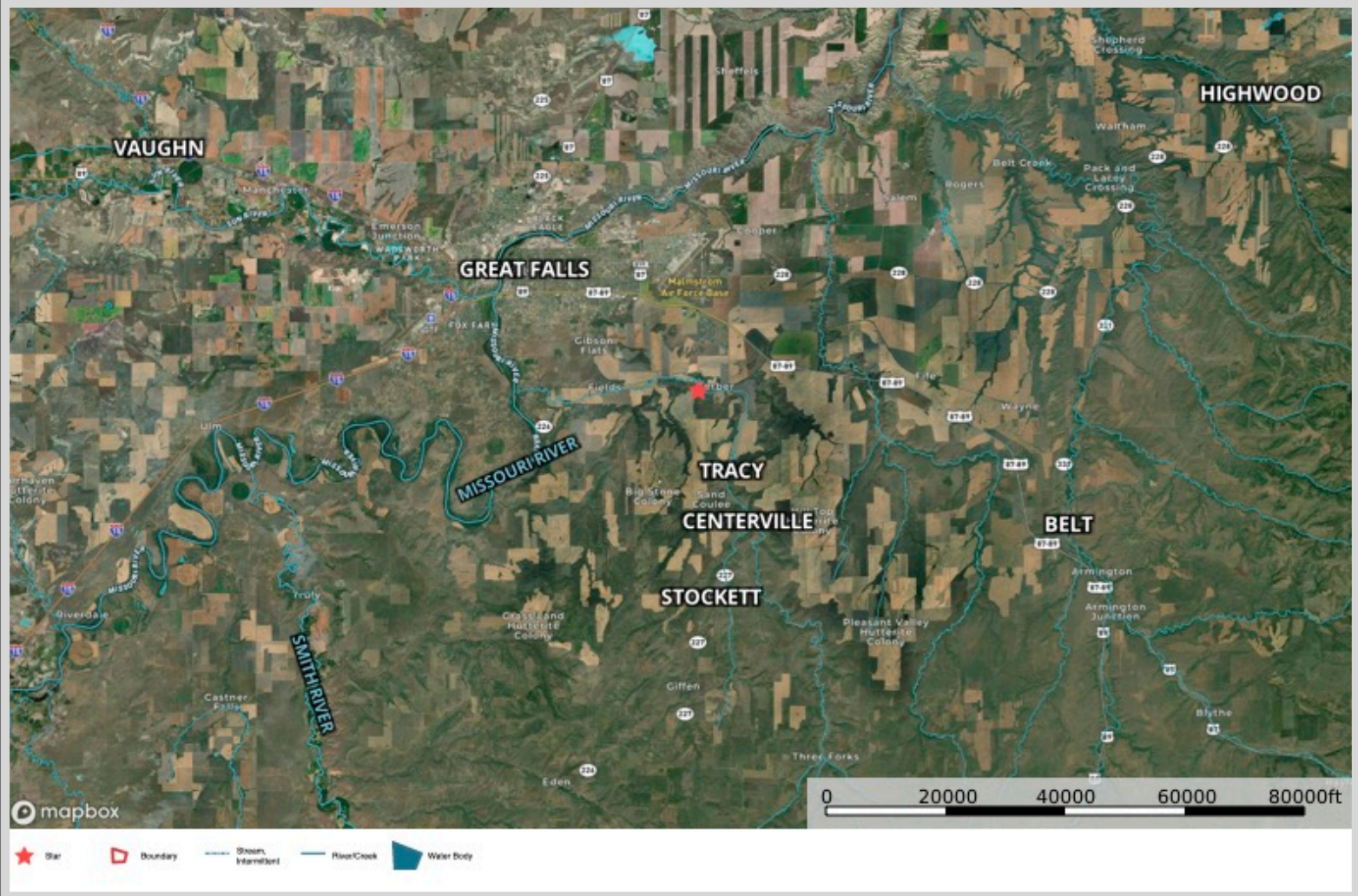
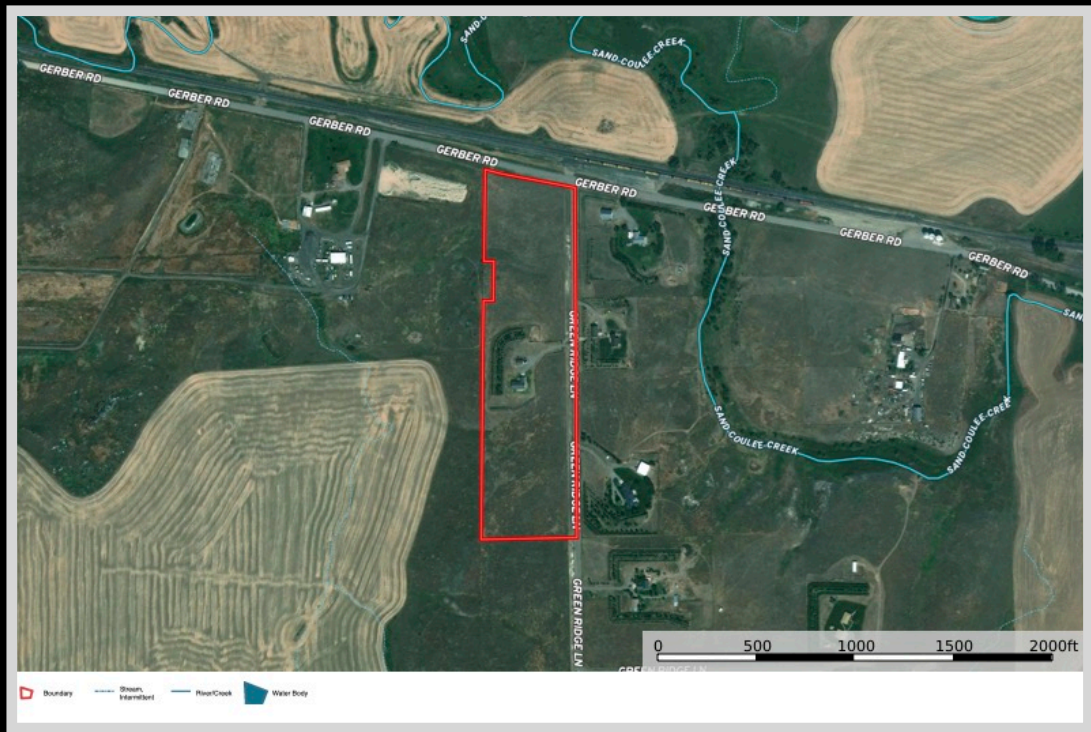
Showdown Ski Area

Ski in the heart of Montana at Showdown Ski Area and the Silver Crest Nordic Trail System which consists of weekly groomed trails for cross-country skiing or snowshoeing. The Kings Hill Snowmobiling System is considered to be one of the finest in Montana and has over 200 miles of marked and groomed trails.



The Block Management program managed through Montana Fish, Wildlife and Parks offers access to private land from 1,230 landowners and covers 7.4 million acres of land. There is no charge to hunt on Block Management land. A Hunters Access Guide is published each year giving details about the program, and it is usually available by August 15. Central Montana also has public land managed by the U. S. Forest Service and Bureau of Land Management.

Property Maps



The information is provided by outside sources and deemed reliable but not guaranteed by the brokerage firm, its agents or representatives. Buyers and their agents are encouraged to conduct due diligence, and verify to their satisfaction, the information contained herein regarding property.